

AWS Activity Report 2023



Minami Alps Hakushu Water Plant, Suntory Products Limited

Address: 2913-1 Torihara, Hakushu-cho, Hokuto-shi, Yamanashi 408-0316, Japan

Business activities: Beverage manufacturing

Certificate acquired: Since 2021

Certification level: Core



Suntory Products Limited Minami-Alps Hakushu Plant Commitment to "Responsible Management and Use of Water Resources (Water Stewardship)"

As the plant manager of the Natural Water Southern Alps Hakushu Plant, I am committed to the following contents.

- I understand common concerns in terms of our water usage, watershed conditions, water resource governance, water balance, water quality, and critical areas related to water resources, and support plant efforts to maintain a healthy water cycle.
- I provide safe water, hygiene facilities and sanitation environment (WASH) for factory employees.
- I strive to comply with water-related laws and regulations, and disclose the progress of the plant initiatives to stakeholders in a transparent manner.
- I work with stakeholders in an open and transparent manner to support public agencies the implementation of plans related to existing water resources in the factory watershed.
- I establish an organizational structure capable of effectively operating AWS standards, and allocate the necessary resources for continuous improvement.

April 1, 2024

Plant Manager,

The Minami Alps

Hakushu Water Plant of

Suntory Products Ltd.

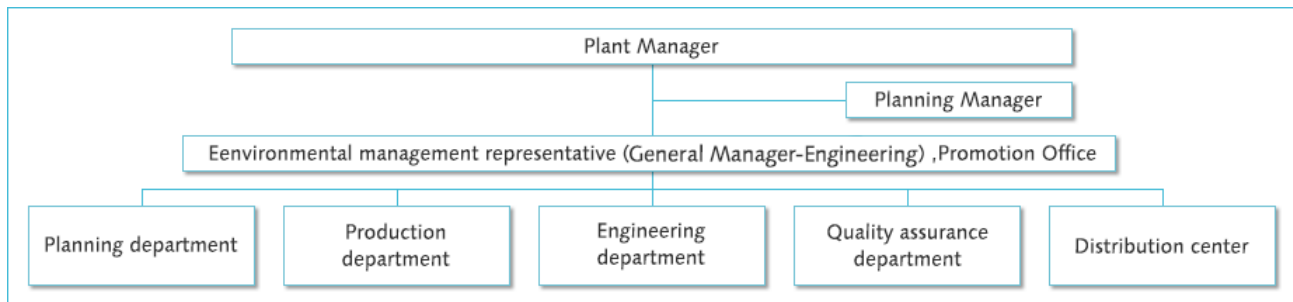
Michiya Kanbe



ALLIANCE FOR
WATER STEWARDSHIP

神戸道也

Internal Governance (AWS Standards: 5.1)



Summary of the Water Stewardship Performance

Water challenges AWS standard 1.6	Target AWS standard 2.3	Performance Target AWS standard 2.3	To engage stakeholders AWS standard 5.4	Activities/Performance of 2023 AWS standard 3.5/3.9
Depletion of groundwater and freshwater resources	Natural Water Sanctuary Minami Alps as critical areas related to water resources, maintain and improve groundwater recharge functions and conserve and enhance biodiversity.	<ul style="list-style-type: none"> ■ Restoration of forest vegetation to create a healthy soil environment with high permeability. • Greening of collapsed granite area. (approx. 0.6 ha) to stabilize the soil. • Tree establishment rate of 20% after 30 years of planting (Planting in 2016) • The growth rate of planted trees shall be maintained at a positive rate. (base year in 2018) • Vegetation recovery in the area where Hokuginodaira Ridge protective fence is installed. (approx. 1 ha) • Soil is covered and protected from soaking by the subsoil vegetation. ■ Maintain nesting and breeding habitat for raptors at the top of the ecosystem pyramid. 	<ul style="list-style-type: none"> ■ Submit annual activity reports to Yamanashi Prefecture and Hokuto City, which have an agreement as "Natural Water Sanctuary Minami Alps". 	<p>Achievement of 2023 target.</p> <ul style="list-style-type: none"> ■ Vegetation research. • Area Hokuginodaira Ridge ~ Amagoidake Peak. • Larix kaempferi planted forest research report • Larix kaempferi planted forest research. • Repair work on earth retaining structure along mountain slopes. ■ Wild bird research.
Depletion of groundwater and freshwater resources	Continuously reduce water consumption, the most important resource in our business activities, in pursuit of water sustainability.	Reduce water consumption rate by 35% less (base year in 2015. Group target)	<p>Submit them to the Construction Department Urban Development Promotion Division, Hokuto City, Yamanashi Prefecture.</p> <ul style="list-style-type: none"> • Monthly Groundwater Adoption • Water level observation record 	<p>Achievement of 2023 target. (1.5% reduction compared to 2022)</p>
Depletion of groundwater and freshwater resources	Increase the willingness of watershed communities to participate and recognize activities.	Secure participants for "Mizuiku - Education Program for Nature and Water" activities and increase awareness of these activities.		The Teaching Program at Schools, 673 participants in 20 schools.
Depletion of groundwater and freshwater resources	Engagement with suppliers.	Raise awareness of sustainability activities among		Conducted annual supplier meetings.

		domestic raw material and packaging suppliers in Japan.		
Jingu River→Kamanashi River→Fuji River water pollution due to effluent	Maintain appropriate effluent quality to be returned to the community in pursuit of water sustainability.	Continuously meet the effluent regulation (standard) values specified in the "Yamanashi Laws and regulations."	<ul style="list-style-type: none"> ■ Constant monitoring of water quality measurement results of public water bodies and groundwater on the Yamanashi Prefecture website. ■ Constant monitoring of water quality measurement results of public water bodies on the Shizuoka Prefecture Consumer and Environmental Protection Division website. ■ Measuring water quality regulations (PH, BOD, SS, coliforms) of effluent through laws and regulations and agreements, and constant monitoring the water level of the regulating tank. 	(Religious) Observance.
WASH	Safe drinking water supply and stable operation of sanitation facilities.	<p>I. Adequate access to safe drinking water for all workers onsite.</p> <p>II. Adequate access to effective sanitation, and protective hygiene for all workers onsite.</p>	<p>I. Daily water supply in compliance with the Water Supply Act.</p> <p>II. Ordinance on Health Standards in the Office, Ministry of Labour Ordinance Article17/Ordinance on Industrial Safety and Health Article628 Install and properly manage the required number of restrooms.</p>	Good maintenance

Water balance (Period : January 1 - December 31, 2023)

[Input]

Type	Unit	Amount of consumption
Water to use (Pumping · Purchasing)	Thousand m ³	2,255

[Output]

Type	Unit	Amount of consumption
Amount of water	Thousand m ³	1,203
pH	Regulation	—
	Voluntary standards	—
	Actual measurement	—
	Measured average	—
BOD	Regulation	mg/ℓ
	Voluntary standards	mg/ℓ
	Actual measurement	mg/ℓ
	Measured average	mg/ℓ

Effluent
(public waters discharge)