

# AWS Activity Report 2023



## Suntory Spirits Limited, Kyushu Kumamoto Plant

Address: 478 Hachimansui, Kitaamagi, Kashima-machi, Kamimashiki-gun, Kumamoto 861-3104, Japan

Business activities: Alcohol and beverage manufacturing

Certificate acquired: Since 2019

Certification level: Platinum



### Commitment to Water Stewardship (AWS Standards: 2.1)

As the Plant Manager of Suntory Kyushu Kumamoto Plant,

- I commit to supporting the site's pursuit of responsible water stewardship.
- I will support the site's efforts to achieve the outcomes of water stewardship, namely good water governance, good water balance, good water quality and healthy Important Water-Related Areas.
- I will respect the right of workers on-site to have access to safe water, adequate sanitation and hygiene.
- I commit that the site will attempt to engage stakeholders throughout its efforts in an open and transparent manner and that the site will comply with all legal and regulatory requirements as well as respect legal and water-related rights and relevant water-related national and international treaties.
- I will coordinate with and support public-sector agencies in their efforts to encourage water-related planning and implement water-related policies.
- I will support the site's efforts to continually improve and adapt its water stewardship actions and plans and ensure that there is sufficient organizational capacity to successfully implement the AWS Standard.
- I commit to disclosing material water-related information to all relevant audiences in an appropriate format.

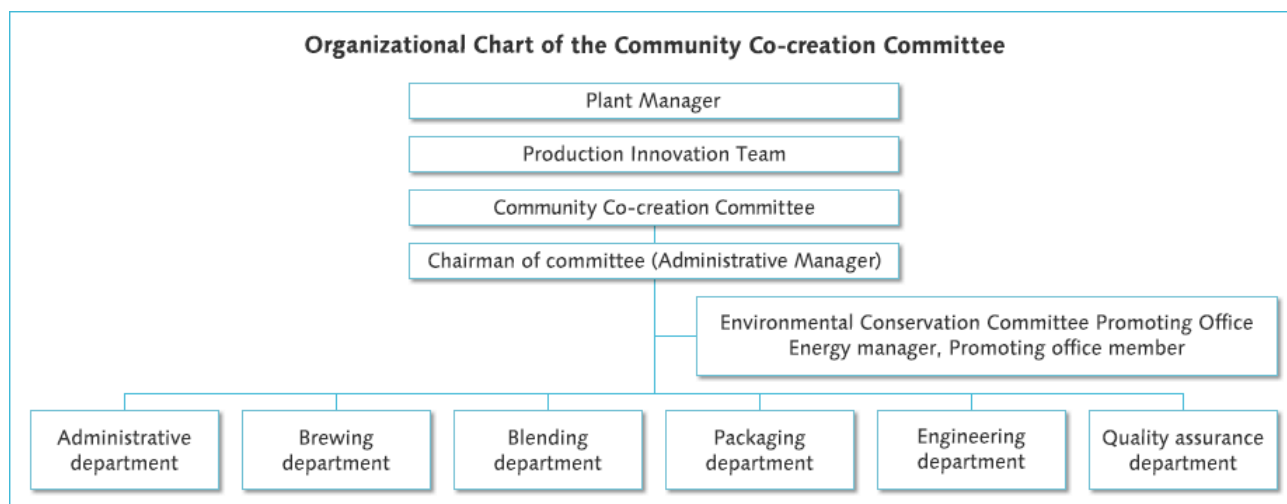
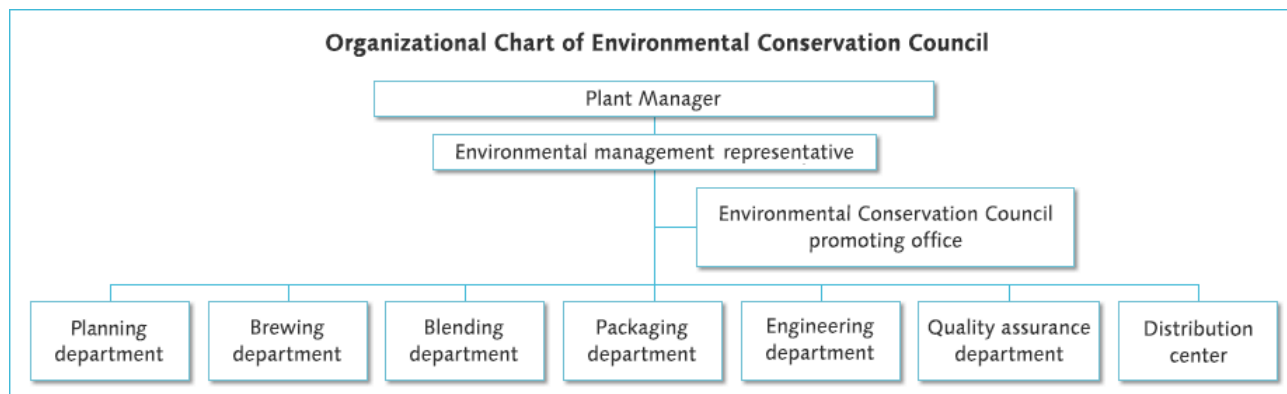
August 25, 2022

Plant Manager, Suntory Kyushu Kumamoto Plant

Shinichiro Sakoda

*Shinichiro Sakoda*

## Internal Governance (AWS Standards: 5.1)



## Summary of the Water Stewardship Performance

Water challenges AWS standard 1.6	Target AWS standard 2.3	Performance Target AWS standard 2.3	To engage stakeholders AWS standard 5.4	Activities/Performance of 2023 AWS standard 3.5/3.9
Depletion of groundwater and freshwater resources	Continuously reduce water consumption, the most important resource in our business activities, in pursuit of water sustainability.	<ul style="list-style-type: none"> <li>Reduce water consumption rate by 35% less (base year in 2015. Group target)</li> <li>Waterlogging Project in the Lower Kanayama River Basin in Mashiki Town" by the Kumamoto Groundwater Foundation, Mashiki Town Land Improvement District, Mashiki Town, and [witness] Kumamoto Prefecture (Suntory is also participating)</li> <li>Monitoring of pumped water volume by Kumamoto Prefecture.</li> </ul>	<ul style="list-style-type: none"> <li>Annual four-party meeting for waterlogging project agreements</li> <li>Provide information on activities to paddy field landowners (briefing sessions, distribution of leaflets, etc.) during the preparation period for waterlogging implementation.</li> <li>Providing information on pumped water volume to the government (Kumamoto Prefecture and Kashima Town)</li> </ul>	Continued water reduction activities. Target for 2023 not achieved due to increased production volume.
Tensuigawa River water pollution due to effluent	Maintain appropriate effluent quality to be returned to the community in pursuit of water sustainability.	Continuously meet the effluent regulation (standard) values specified in the "Kumamoto Laws and regulations."	<ul style="list-style-type: none"> <li>Monitoring of water quality measurement results of public water bodies by Kumamoto Prefecture Consumer and Environmental Protection Division.</li> </ul>	(religious) observance

			<ul style="list-style-type: none"> <li>Measuring water quality regulations (PH, BOD, SS, coliforms) of effluent through laws and regulations and agreements.</li> </ul>	
Depletion of groundwater and freshwater resources	Natural Water Sanctuary Aso as critical areas related to water resources, maintain and improve groundwater recharge functions and conserve and enhance biodiversity.	<ul style="list-style-type: none"> <li>Restoration of forest vegetation to create a healthy soil environment with high permeability.</li> <li>Maintain nesting and breeding habitat for raptors at the top of the ecosystem pyramid.</li> </ul>		<ul style="list-style-type: none"> <li>Area of thinning for removal of trees from planted forest 31.95ha</li> <li>Distance of work paths 3,176m</li> <li>Wild bird research</li> </ul> <p>Indicator behaviors related to courtship in mountain hawk-eagles, confirmed breeding of two pairs of Grey-faced Buzzards.</p>
Depletion of groundwater and freshwater resources	<ol style="list-style-type: none"> <li>Maintain and improve groundwater recharge functions and conserve.</li> <li>Communicate the value of groundwater recharge to local farmers.</li> </ol>	<ol style="list-style-type: none"> <li>Promotion of groundwater recharge through winter rice field. 11ha flooding "Fuyumizu tanbo"</li> <li>Sending materials to all eligible farmers.</li> </ol>		<ol style="list-style-type: none"> <li>Achievement of 2023 target. Continue farmers' waterlogging project contracts.</li> <li>Achievement of 2023 target.</li> </ol>
Depletion of groundwater and freshwater resources	Increase the willingness of watershed communities to participate and recognize activities.	Secure participants for "Mizuiku – Education Program for Nature and Water" activities and increase awareness of these activities.		<ul style="list-style-type: none"> <li>The Outdoor School of Forest and Water, 209 participants in 9 sessions.</li> <li>The Teaching Program at Schools, 457 participants in 8 schools.</li> </ul>
Depletion of groundwater and freshwater resources	Environmental conservation activities by employees at a nearby spring.	<p>In the abundant spring water area located near the plant</p> <ul style="list-style-type: none"> <li>Preventing pollution of water resources and the surrounding environment.</li> <li>Fostering communication with residents of the area.</li> <li>Maintain and improve employees' environmental awareness</li> </ul>		Achievement of 2023 target. Employees picked up trash and cleaned up at Ukishima Spring Park.
Depletion of groundwater and freshwater resources	Engagement with suppliers.	Raise awareness of sustainability activities among domestic raw material and packaging suppliers in Japan.		Conducted annual supplier meetings.
WASH	Safe drinking water supply and stable operation of sanitation facilities.	<ol style="list-style-type: none"> <li>Adequate access to safe drinking water for all workers onsite.</li> <li>Adequate access to effective sanitation, and protective hygiene for all workers onsite.</li> </ol>	<ol style="list-style-type: none"> <li>Daily water supply in compliance with the Water Supply Act.</li> <li>Ordinance on Health Standards in the Office, Ministry of Labor Ordinance Article17/Ordinance on Industrial Safety and Health Article628 Install and properly manage the required number of restrooms.</li> </ol>	Good maintenance

## Water balance (Period : January 1 - December 31, 2023)

[Input]

Type	Unit	Amount of consumption
Water to use (Pumping · Purchasing)	Thousand m <sup>3</sup>	1,180

[Output]

Type	Unit	Amount of consumption
Amount of water	Thousand m <sup>3</sup>	881
pH	Regulation	—
	Voluntary standards	—
	Actual measurement	—
	Measured average	—
BOD	Regulation	mg/ℓ
	Voluntary standards	mg/ℓ
	Actual measurement	mg/ℓ
	Measured average	mg/ℓ

Effluent  
(public waters discharge)