

# AWS Activity Report 2023



## Suntory Products Limited Okudaisen Bunanomori Water Plant

Address: 1177 Kasarabara Aza Mitsukue, Oaza, Kofu-cho, Hino-gun, Tottori  
689-4424, Japan

Business activities: Beverage manufacturing

Certificate acquired: Since 2018

Certification level: Core



### Commitment to Water Stewardship (AWS Standards: 2.1)

As a Plant Manager of Suntory Okudaisen Bunanomori Water Plant,

- I commit to supporting the site's pursuit of responsible water stewardship.
- I will support the site's efforts to achieve the outcomes of water stewardship, namely good water governance, good water balance, good water quality and healthy Important Water-Related Areas.
- I will respect the right of workers on-site to have access to safe water, adequate sanitation and hygiene.
- I commit that the site will attempt to engage stakeholders throughout its efforts in an open and transparent manner and that the site will comply with all legal and regulatory requirements as well as respect legal and water-related rights and relevant water-related national and international treaties.
- I will coordinate with and support public-sector agencies in their efforts to encourage water-related planning and implement water-related policies.
- I will support the site's efforts to continually improve and adapt its water stewardship actions and plans and ensure that there is sufficient organizational capacity to successfully implement the AWS Standard.
- I commit to disclosing material water-related information to all relevant audiences in an appropriate format.

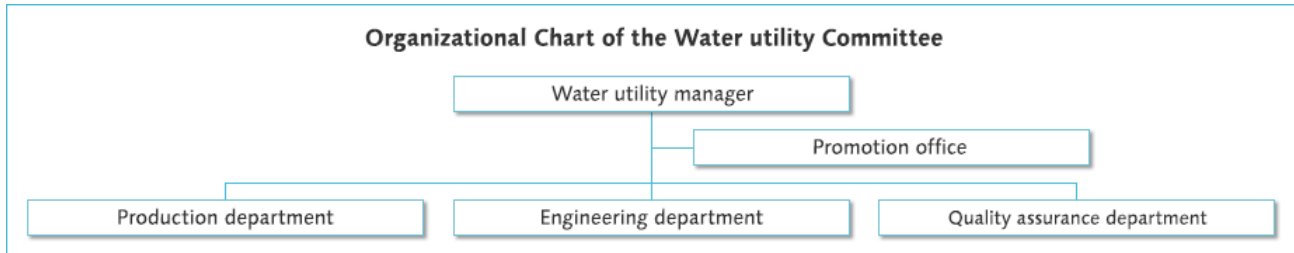
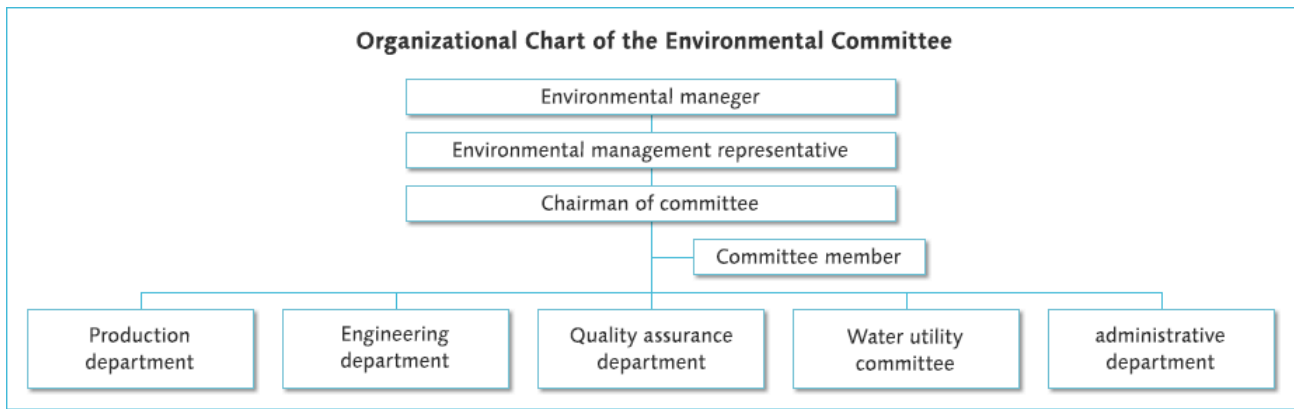
April 1, 2023

Plant Manager, Suntory Okudaisen Bunanomori Water Plant

Toshiaki Kurihara

A handwritten signature in black ink, reading "栗原俊明" (Toshiaki Kurihara).

### Internal Governance (AWS Standard: 5.1)



## Summary of the Water Stewardship Performance

Water challenges AWS standard 1.6	Target AWS standard 2.3	Performance Target AWS standard 2.3	To engage stakeholders AWS standard 5.4	Activities/Performance of 2023 AWS standard 3.5/3.9
Depletion of groundwater and freshwater resources	Disclosure of information related to water from production activities and identification of issues in the catchments.	<ul style="list-style-type: none"> <li>■ Disclose information on water consumption, effluent, and other water-related activities to ensure accountability.</li> <li>■ Communicate with government, academics, the community, and others to obtain a wide range of opinions on information disclosure and to identify common issues within the catchments.</li> <li>■ Gather off-site information on the catchments to determine if there are any risks at the site. Understand the impact as needed.</li> </ul>	<ul style="list-style-type: none"> <li>■ Provide information to the committee and Kofu-cho town.</li> <li>• Limit pumping through agreements.</li> <li>• Constant monitoring using the Kasahara Environmental Monitoring Committee.</li> </ul>	Conduct the Environmental monitoring committee meetings.
Depletion of groundwater and freshwater resources	Natural Water Sanctuary "Okudaisen Bunano mori" as critical areas related to water resources, maintain and improve groundwater recharge functions and conserve and enhance biodiversity.	<ul style="list-style-type: none"> <li>■ Conserve the quality and quantity of water used at the plant into the future.</li> <li>■ Maintain nesting and breeding habitat for raptors at the top of the ecosystem pyramid.</li> </ul>		<ul style="list-style-type: none"> <li>■ Forest maintenance activities               <ul style="list-style-type: none"> <li>• Area of bamboo grass cleared to create renewable broad-leaved forests. (1ha)</li> <li>• Recover understory vegetation in area of bamboo grass cleared. (3ha)</li> <li>• Area thinned and trimmings removed in artificial cypress forest. (1.3ha)</li> <li>• Roadways for thinning and removing trimming with low environmental impact. (392m)</li> </ul> </li> <li>■ Wild bird research</li> </ul>

Depletion of groundwater and freshwater resources	Continuously reduce water consumption, the most important resource in our business activities, in pursuit of water sustainability.	Reduce water consumption rate by 35% less (base year in 2015. Group target)		Continued efforts to promote water conservation and recirculation of cleaning water. Although an excessive amount of well blowout occurred, it was handled appropriately. Production volume reached a record high, but water consumption per unit of production was the same level as in 2009.
Depletion of groundwater and freshwater resources	Increase the willingness of watershed communities to participate and recognize activities.	Secure participants for "Mizuiku – Education Program for Nature and Water" activities and increase awareness of these activities.		<ul style="list-style-type: none"> <li>■ The Outdoor School of Forest and Water, 651 participants in 25 sessions.</li> <li>■ The Teaching Program at Schools, 665 participants in 11 schools.</li> </ul>
Depletion of groundwater and freshwater resources	Engagement with suppliers.	Raise awareness of sustainability activities among domestic raw material and packaging suppliers in Japan.		Conducted annual supplier meetings.
Hosotani River water pollution due to effluent	Maintain appropriate effluent quality to be returned to the community in pursuit of water sustainability.	Compliance with "Agreement on Environmental Conservation in Kasarahara Industrial Park"	<ul style="list-style-type: none"> <li>■ Provide information to the committee and Kofu-cho town.</li> <li>• Measuring water quality regulations (PH, BOD, SS, TP, coliforms) of effluent through laws and regulations and agreements.</li> <li>• Constant monitoring using the Kasahara Environmental Monitoring Committee.</li> </ul>	Compliance with agreed value standards through proper operation and management. Reduce water risk through separate collection of chemicals and treatment by specialized companies.
WASH	Safe drinking water supply and stable operation of sanitation facilities.	<p>I. Adequate access to safe drinking water for all workers onsite.</p> <p>II. Adequate access to effective sanitation, and protective hygiene for all workers onsite.</p>	<p>I. Daily water supply in compliance with the Water Supply Act.</p> <p>II. Ordinance on Health Standards in the Office, Ministry of Labor Ordinance Article17/Ordinance on Industrial Safety and Health Article628 Install and properly manage the required number of restrooms.</p>	Good maintenance

## Energy balance (Period : January 1 - December 31, 2023)

[Input]

Type	Unit	Amount of consumption
Water to use (Pumping · Purchasing)	Thousand m <sup>3</sup>	720

[Output]

Type	Unit	Amount of consumption
Amount of water	Thousand m <sup>3</sup>	286
pH	Regulation	—
	Voluntary standards	—
	Actual measurement	—
	Measured average	—
BOD	Regulation	mg/ℓ
	Voluntary standards	mg/ℓ
	Actual measurement	mg/ℓ
	Measured average	mg/ℓ
SS	Regulation	mg/ℓ
	Voluntary standards	mg/ℓ
	Actual measurement	mg/ℓ
	Measured average	mg/ℓ
Coliforms	Regulation	piece/cm <sup>3</sup>
	Voluntary standards	piece/cm <sup>3</sup>
	Actual measurement	piece/cm <sup>3</sup>
	Measured average	piece/cm <sup>3</sup>
Air	CO <sub>2</sub>	thousand tons
	NO <sub>x</sub>	
	SO <sub>x</sub>	
By-products and waste	consumption	thousand tons
	Recycling rate	%
Substances subject to PRTR (emissions and transfers of substances subject to reporting)*	ton	

\* Period : April 1, 2023 –March 31, 2024